

archlum
The right light for every space



Meira

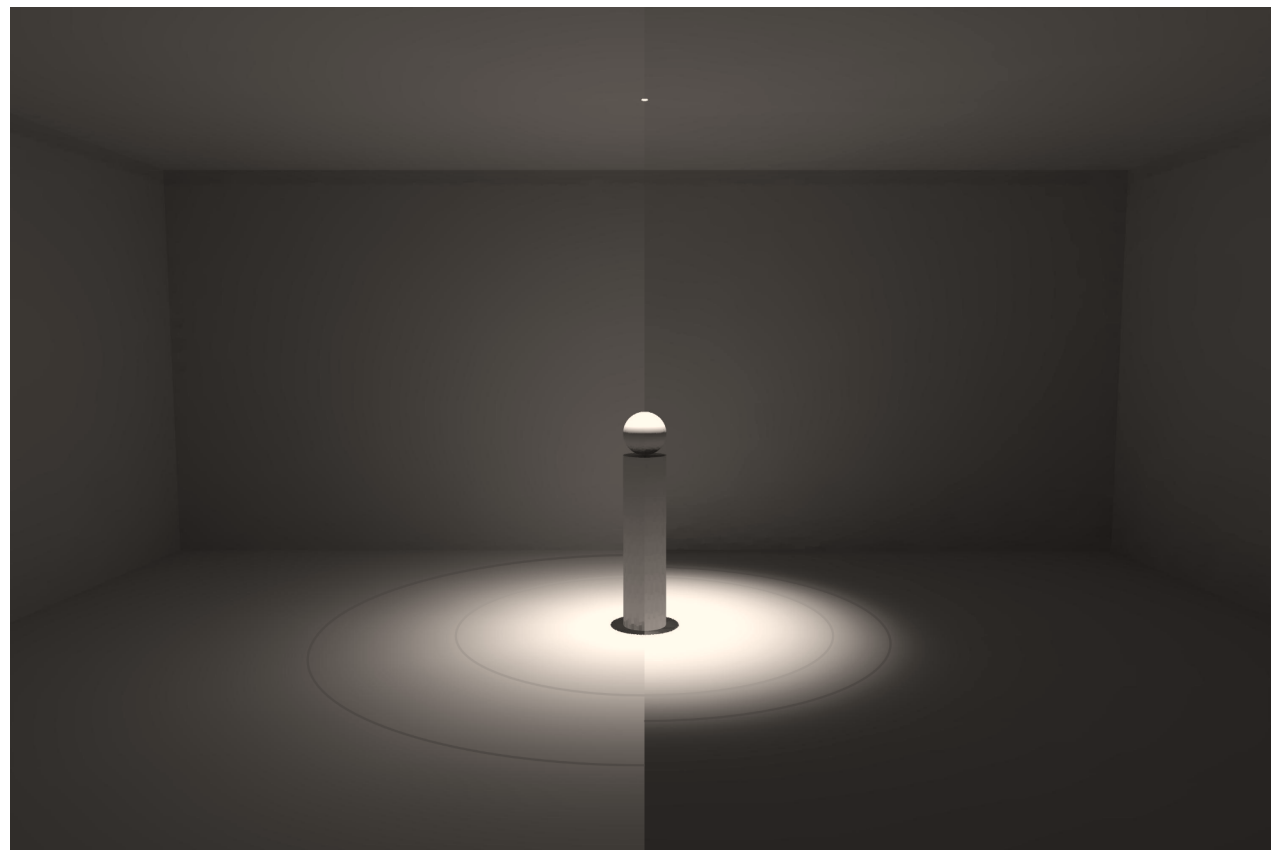
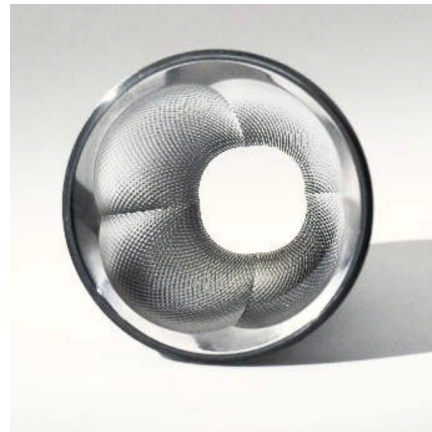
State-of-the-art Downlight

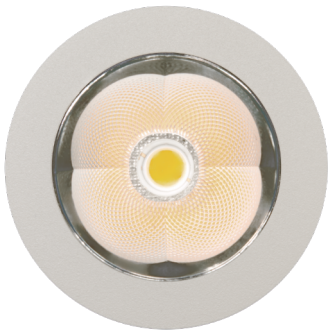
Archlum Meira

Meira family is made with unique and state-of-the-art reflector designed by Bartenbach, made in Austria with highest optical standards.

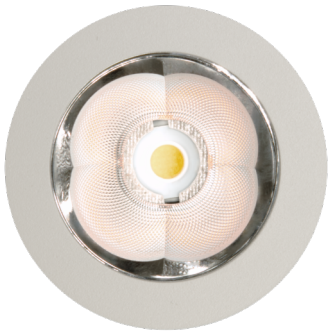
Meira reflectors are optimised for best cutoff with their specific height ratio. The small difference between main (beam) angle and spilled light (field) angle brings sharp cut-off and higher visual comfort compared to standard reflector solutions. Also it contributes to a strong contrast and a dramatic lighting design where it is needed.

Their micro facets design allows a perfect control of the light emitted by the LED with best light uniformity and no color shift over angle. Their small diameter creates a discreet design using the latest COB high density technology.





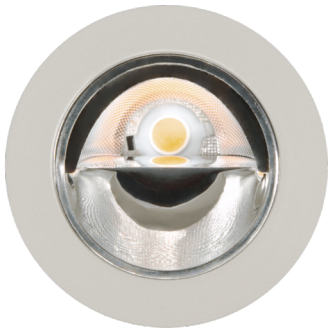
30° (FWHM)



50° (FWHM)

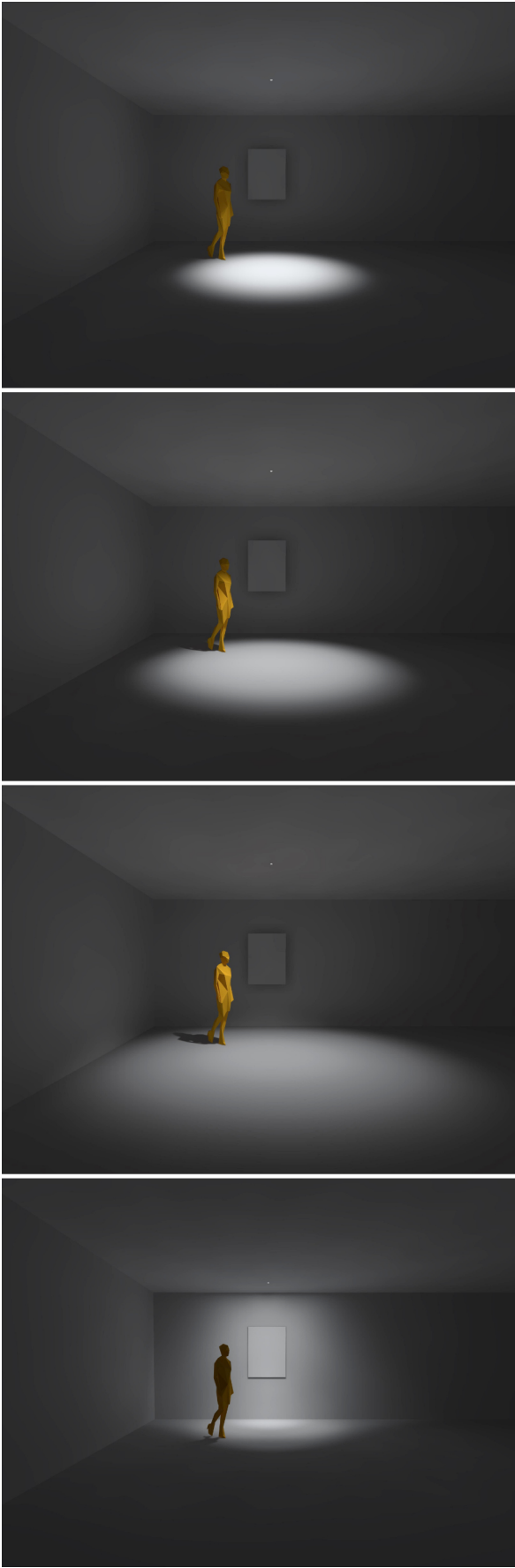


70° (FWHM)



Asymmetric
/wall washer

(FWHM - Beam angle at half value of maximum light intensity)



Brilliant light

High temperature polycarbonate with pure aluminum PVD reflective coating is translating high efficiency to brilliant light.

Rich design

Robust housing made of aluminium, with fine structured coating and springs made of stainless steel have high quality and rich appearance.

Longevity

Large heat sink designed to promote air flow provides proper cooling and assures life time of more than 100.000 hours.

Remote control

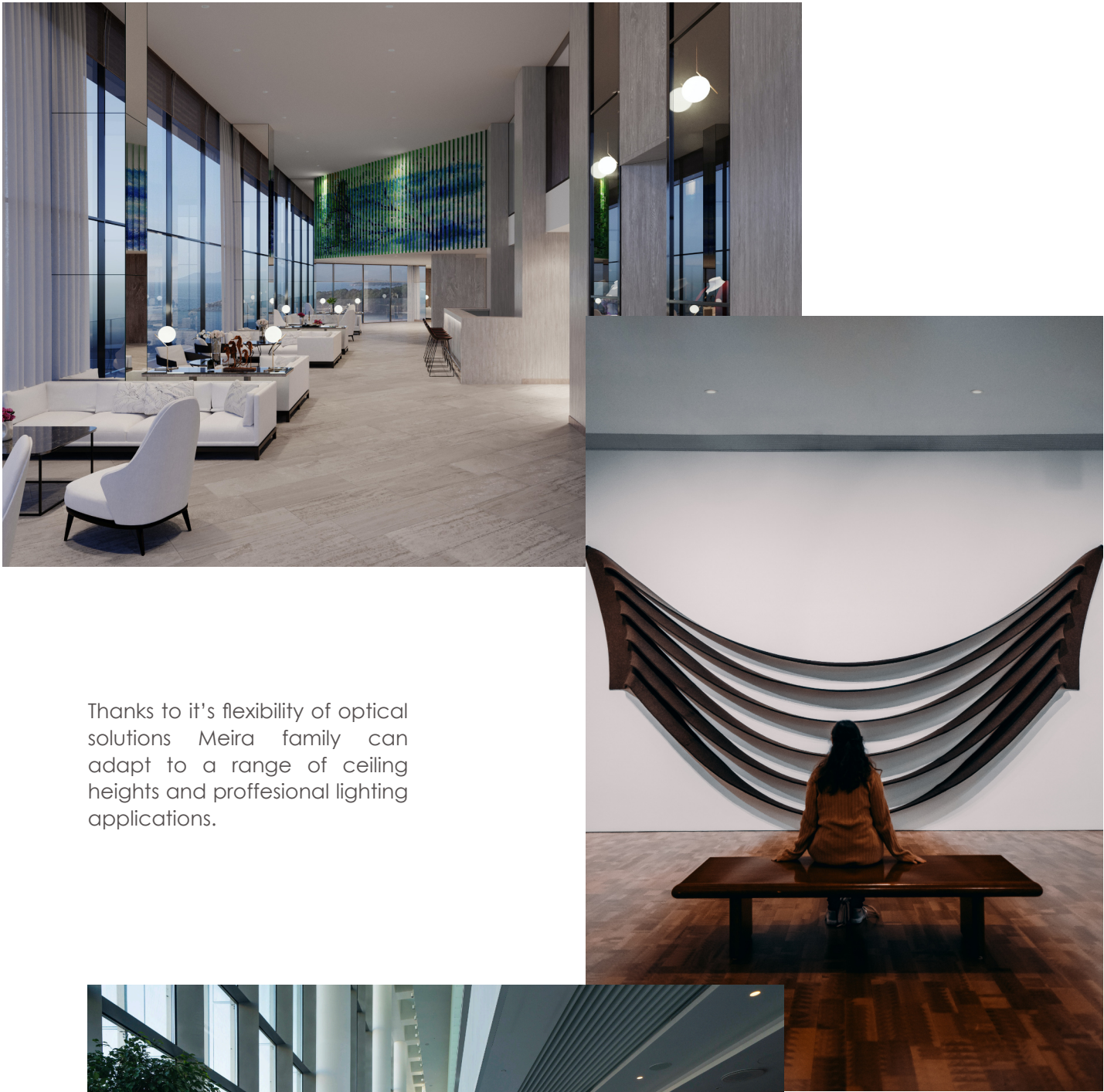
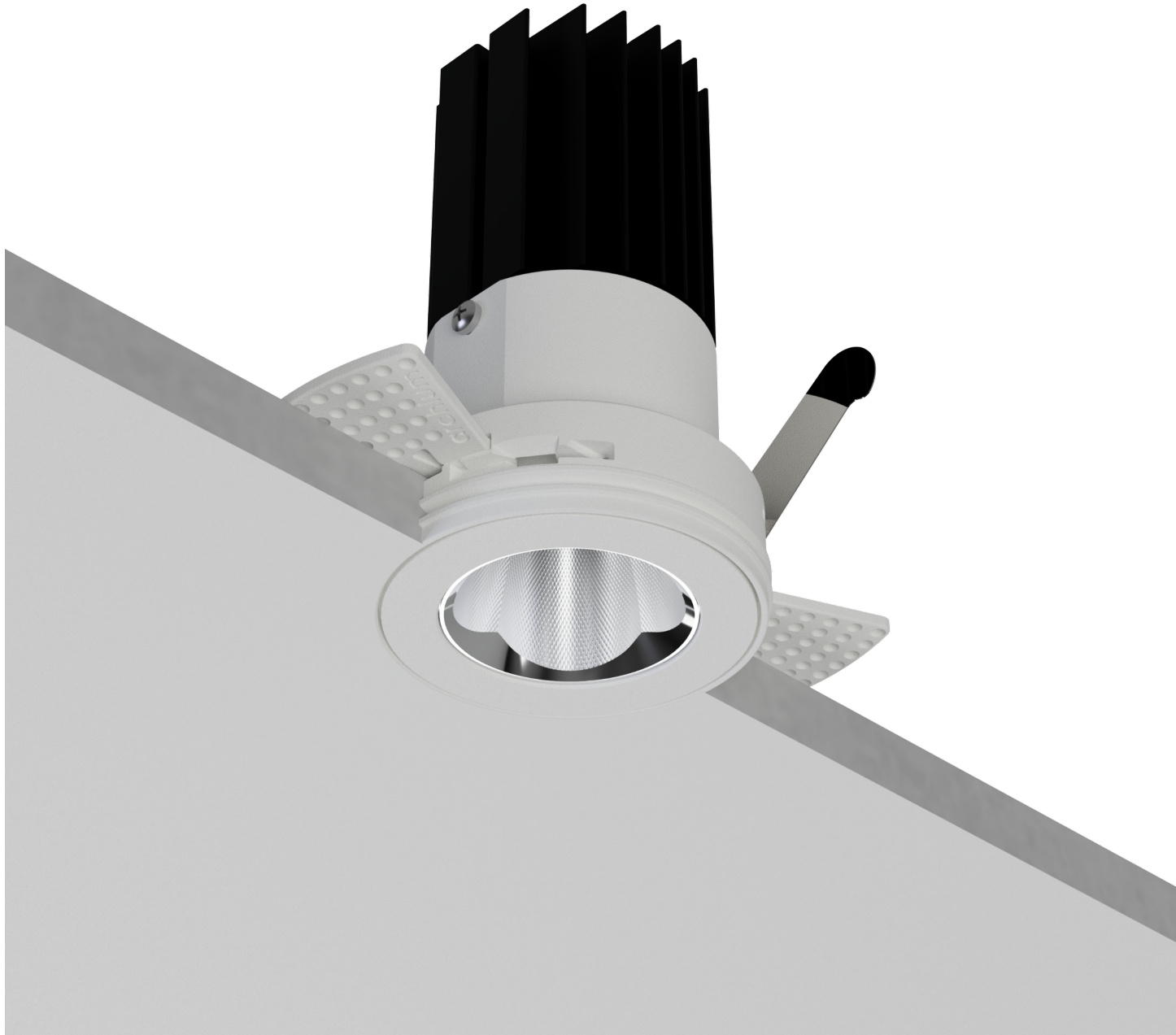
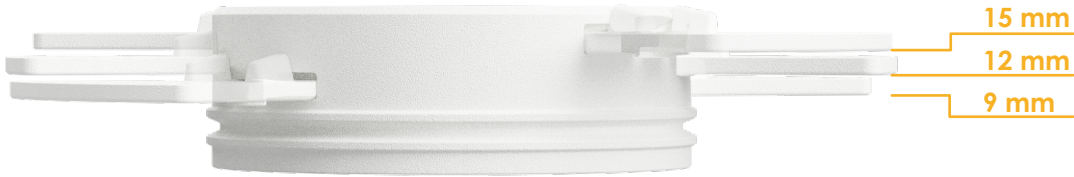
Choice of high quality control gear allows wireless communication through Bluetooth protocol. User friendly open source app is for iPhone and Android.



Trimless installation

For flushed mounting, without visible frame, trimless frame can plastered in the ceiling and painted over.

By clipping screwing pad to a specific place, frame can be adapted to different thickness of false ceilings.



Thanks to it's flexibility of optical solutions Meira family can adapt to a range of ceiling heights and proffesional lighting applications.



MEIRA 30



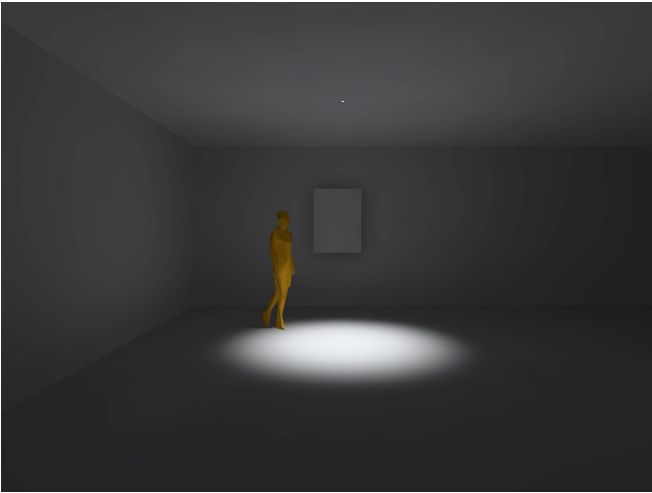
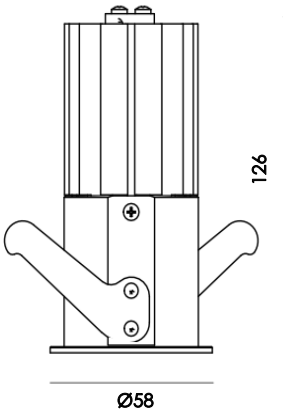
Color rendering index

CRI >90

System power

10 W

14 W



30° Beam



| Catalogue ID | CCT | UGR | Beam | Light output | Power | Dimensions |
|------------------------|------|-----|------|--------------|-------|------------|
| ARCH-MEIRA-T-30-927-10 | 2700 | <16 | 30 ° | 810 lm | 10 W | ø58x126 |
| ARCH-MEIRA-T-30-930-10 | 3000 | <16 | 30 ° | 870 lm | 10 W | ø58x126 |
| ARCH-MEIRA-T-30-940-10 | 4000 | <16 | 30 ° | 930 lm | 10 W | ø58x126 |
| ARCH-MEIRA-T-30-927-14 | 2700 | <16 | 30 ° | 1080 lm | 14 W | ø58x126 |
| ARCH-MEIRA-T-30-930-14 | 3000 | <16 | 30 ° | 1150 lm | 14 W | ø58x126 |
| ARCH-MEIRA-T-30-940-14 | 4000 | <16 | 30 ° | 1230 lm | 14 W | ø58x126 |

MEIRA 50



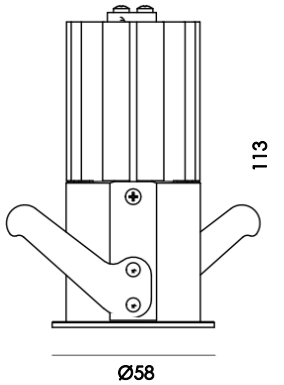
Color rendering index

CRI >90

System power

10 W

14 W



50° Beam



| Catalogue ID | CCT | UGR | Beam | Light output | Power | Dimensions |
|------------------------|------|-----|------|--------------|-------|------------|
| ARCH-MEIRA-T-50-927-10 | 2700 | <16 | 50 ° | 880 lm | 10 W | ø58x113 |
| ARCH-MEIRA-T-50-930-10 | 3000 | <16 | 50 ° | 950 lm | 10 W | ø58x113 |
| ARCH-MEIRA-T-50-940-10 | 4000 | <16 | 50 ° | 1020 lm | 10 W | ø58x113 |
| ARCH-MEIRA-T-50-927-14 | 2700 | <16 | 50 ° | 1170 lm | 14 W | ø58x113 |
| ARCH-MEIRA-T-50-930-14 | 3000 | <16 | 50 ° | 1260 lm | 14 W | ø58x113 |
| ARCH-MEIRA-T-50-940-14 | 4000 | <16 | 50 ° | 1350 lm | 14 W | ø58x113 |

MEIRA 70



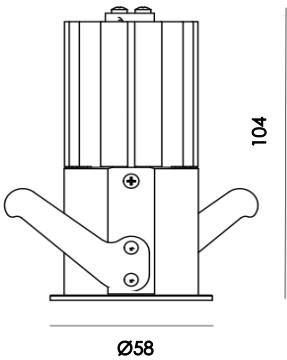
Color rendering index

CRI >90

System power

10 W

14 W



70° Beam

MEIRA WW



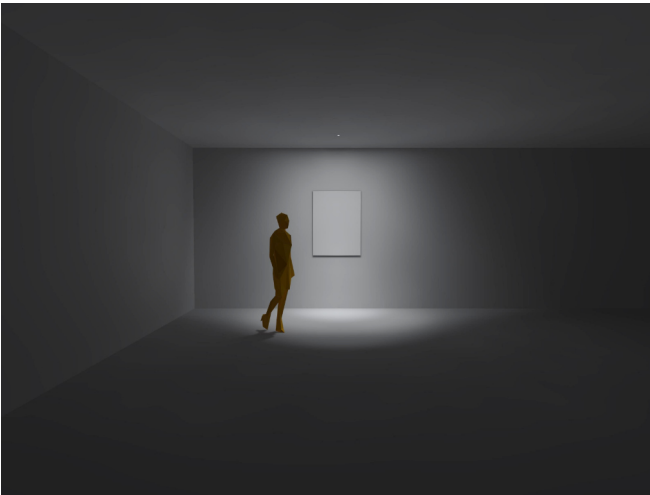
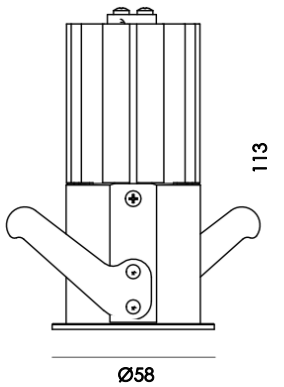
Color rendering index

CRI >90

System power

10 W

14 W



Asymmetric/wall washer



| Catalogue ID | CCT | UGR | Beam | Light output | Power | Dimensions |
|------------------------|------|-----|------|--------------|-------|------------|
| ARCH-MEIRA-T-70-927-10 | 2700 | <25 | 70 ° | 930 lm | 10 W | ø58x104 |
| ARCH-MEIRA-T-70-930-10 | 3000 | <25 | 70 ° | 1000 lm | 10 W | ø58x104 |
| ARCH-MEIRA-T-70-940-10 | 4000 | <25 | 70 ° | 1070 lm | 10 W | ø58x104 |
| ARCH-MEIRA-T-70-927-14 | 2700 | <28 | 70 ° | 1250 lm | 14 W | ø58x104 |
| ARCH-MEIRA-T-70-930-14 | 3000 | <28 | 70 ° | 1320 lm | 14 W | ø58x104 |
| ARCH-MEIRA-T-70-940-14 | 4000 | <28 | 70 ° | 1420 lm | 14 W | ø58x104 |



| Catalogue ID | CCT | Beam | Light output | Power | Dimensions |
|------------------------|------|------|--------------|-------|------------|
| ARCH-MEIRA-T-WW-927-10 | 2700 | asym | 850 lm | 10 W | ø58x113 |
| ARCH-MEIRA-T-WW-930-10 | 3000 | asym | 920 lm | 10 W | ø58x113 |
| ARCH-MEIRA-T-WW-940-10 | 4000 | asym | 990 lm | 10 W | ø58x113 |
| ARCH-MEIRA-T-WW-927-14 | 2700 | asym | 1150 lm | 14 W | ø58x113 |
| ARCH-MEIRA-T-WW-930-14 | 3000 | asym | 1220 lm | 14 W | ø58x113 |
| ARCH-MEIRA-T-WW-940-14 | 4000 | asym | 1300 lm | 14 W | ø58x113 |

archlum

The right light for every space

www.archlum.com