

**archlum**  
The right light for every space



**Retro**  
MR16 Retrofit



**Flexible installation**

Thanks to the modular concept Retro allows easy combination of system elements which makes it suitable for every project.

Available in two basic shapes, round and square. Each version can be installed in ceiling with choice of suitable frame; with a visible trim or trimless.

**Frame color:**



**Maintainability**

Easy to install, easy to maintain. Retro family is based on MR16 fitting that allows it to be equipped with various range of standard LED modules.

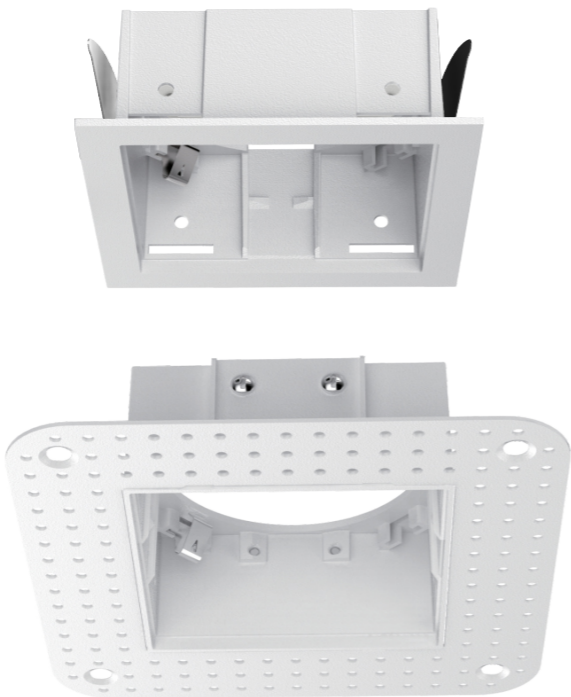
Once frame is installed in ceiling, LED module and power supply can be approached from the front side, without dismounting luminaire from the ceiling. This makes the upgrade of the light source and maintenance very easy and effective.

Design variation

Metalised reflector in different color finishes can adapt to visual identity of the space in general and public areas.

Deeply recessed light source and pinhole design tend to hide light source and make this product blend into ceiling as invisible glare-free light which is especially appreciated in hotel application.

Insert color:



Light characteristics

Swivelling of light source up to 30° and rotation for 355° allows to direct light beam towards objects and artworks and their accentuation by means of spot light distribution.

Wide beam angle illuminating wall surface can be used for generating vertical illumination and increase portion of general light, providing spatial and open feeling.



FULL RANGE OVERVIEW:

VRA1



VRA2



VRA3



VRA4



VSA1



VSA2



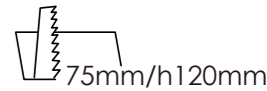
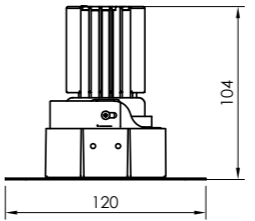
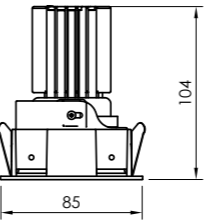
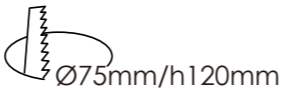
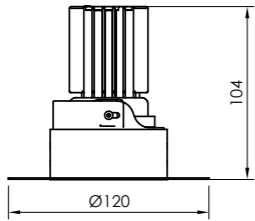
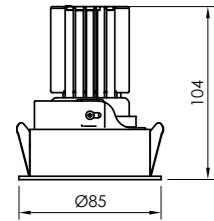
VSA4



IP54



CEILING



# archlum

The right light for every space

[www.archlum.com](http://www.archlum.com)